

Risk Level Report

Report for assessments completed between 1/1/2000 and 11/1/2017

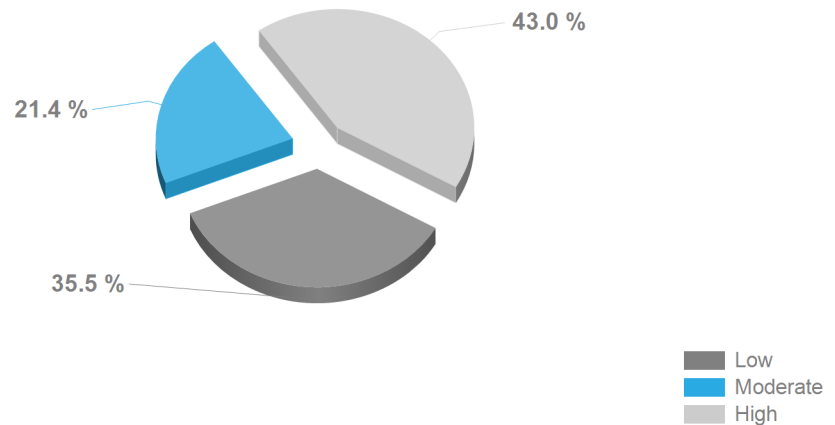


Risk Level Report

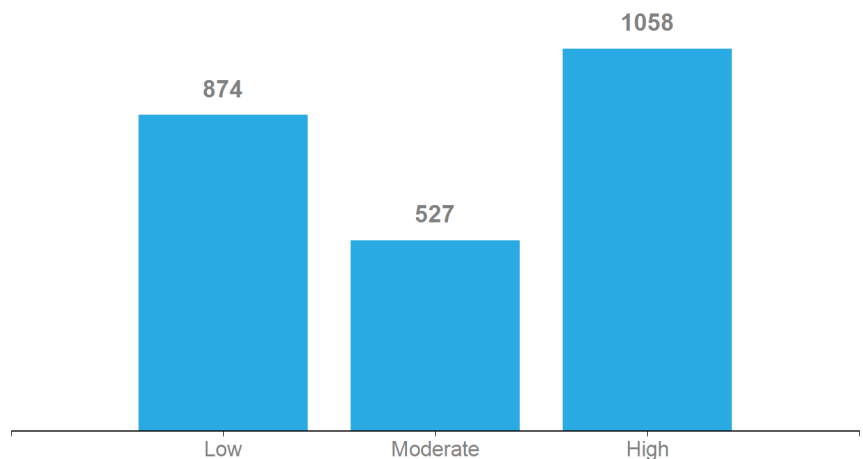
This report shows a breakdown of risk levels based on the most recent completed assessment for each subject. Risk level is a key factor in the overall risk to re-offend, and helps make supervision level decisions moving forward with the subjects.

The charts to the right are a visual representation of risk level for completed assessments between 1/1/2000 and 11/1/2017, for the selected users.

Percentage
PERCENTAGE GROUPED BY RISK LEVEL



Count
COUNT GROUPED BY RISK LEVEL



More Information - Use the table below to get more specific information. Each column can be sorted by the value in those columns.